

The Presentation Layer (Cascading Style Sheets)

Webpage Design

Style Rules

Selector

Declaration

```
h1 {color: red}
```

Property

Value

http://www.w3schools.com/css/css_syntax.asp

<http://css.maxdesign.com.au/selectutorial/rule.htm>

What Is CSS?

- Separating content from page layout
- Smaller files = quicker load
- Much greater control over formatting
- Easier site maintenance
- Improves accessibility

Multiple Property/Value Pairs

Semicolon

```
h1 {color: red;  
    background: yellow}
```

Grouping Selectors

```
h2, h3, h4 {  
font-family: arial, helvetica, sans-serif;  
font-weight: normal;  
color: #343F4E;  
}
```

Types of CSS Rules

HTML Selector `h1 {color: red;}`

Class `.footer {font-size: 13px;}`

ID `#obj1 {margin-left: 35px;}`

Pseudo-Class Rules

```
a {  
  color:#009;  
  text-decoration: none;  
}  
a:hover {  
  text-decoration:  
  underline;  
}
```

http://www.w3schools.com/css/css_pseudo_classes.asp

http://css.maxdesign.com.au/selectutorial/selectors_pseudo_class.htm

Adding Styles

HTML Tag

```
<h1 style="color: red;">...</h1 >
```

Web Page

```
<style type="text/css">  
  h1 {color: red;}          within head section  
</style>
```

Web Site

```
<link rel="stylesheet" type="text/css" href="main.css" />
```

Adding Classes to Tags

The class attribute

```
<p class="footer">...</p>
```

The and <div> Tags

- No inherent formatting (they do nothing)
- Ideal for applying classes
- The tag is an “inline” element
- The <div> tag is used to define content sections (a block-level element)

```
<div class="indent">
```

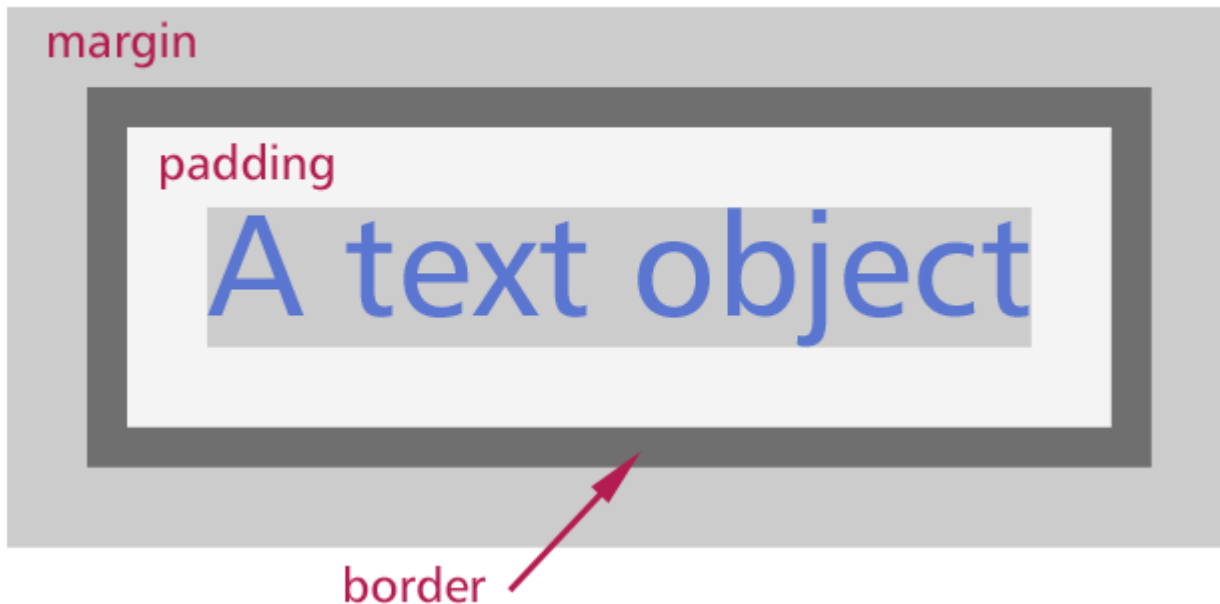
```
<p>
```

```
This is <span class="imp">very</span> important
```

```
</p>
```

```
</div>
```

Borders, Margins and Padding



<http://www.w3.org/TR/REC-CSS2/box.html>

<http://www.hicksdesign.co.uk/boxmodel>

Web Safe Fonts

Arial

Comic Sans MS

Georgia

Impact

Times New Roman

Trebuchet MS

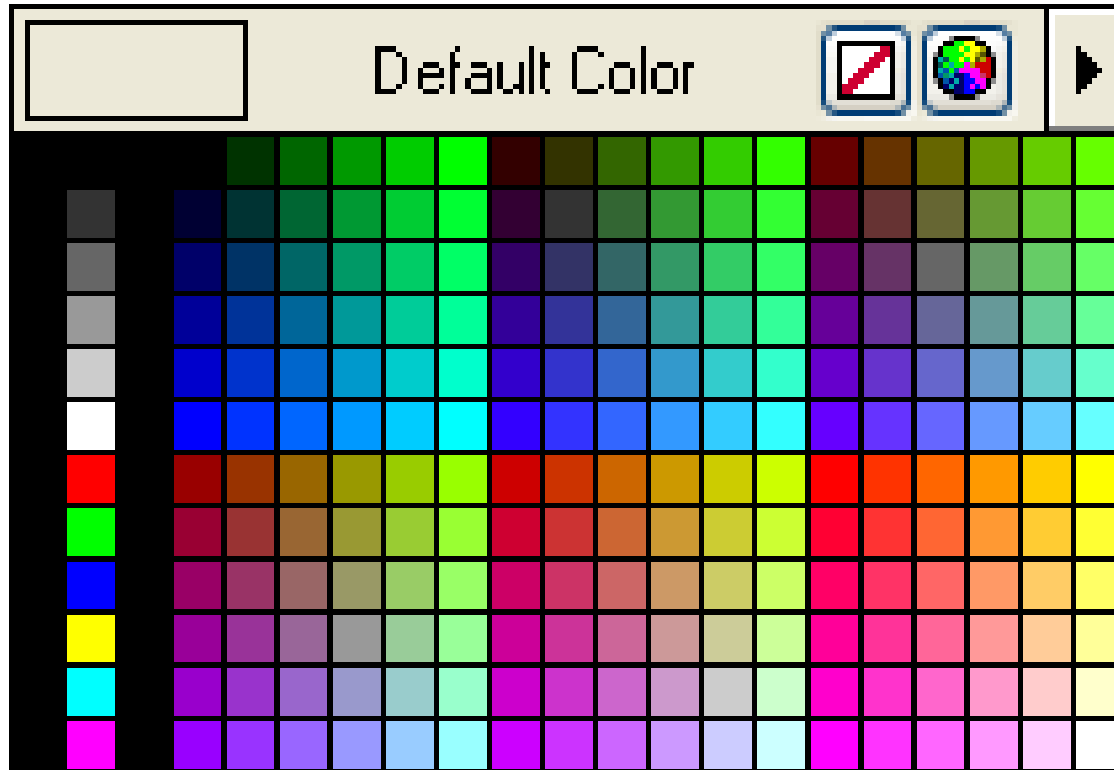
Verdana



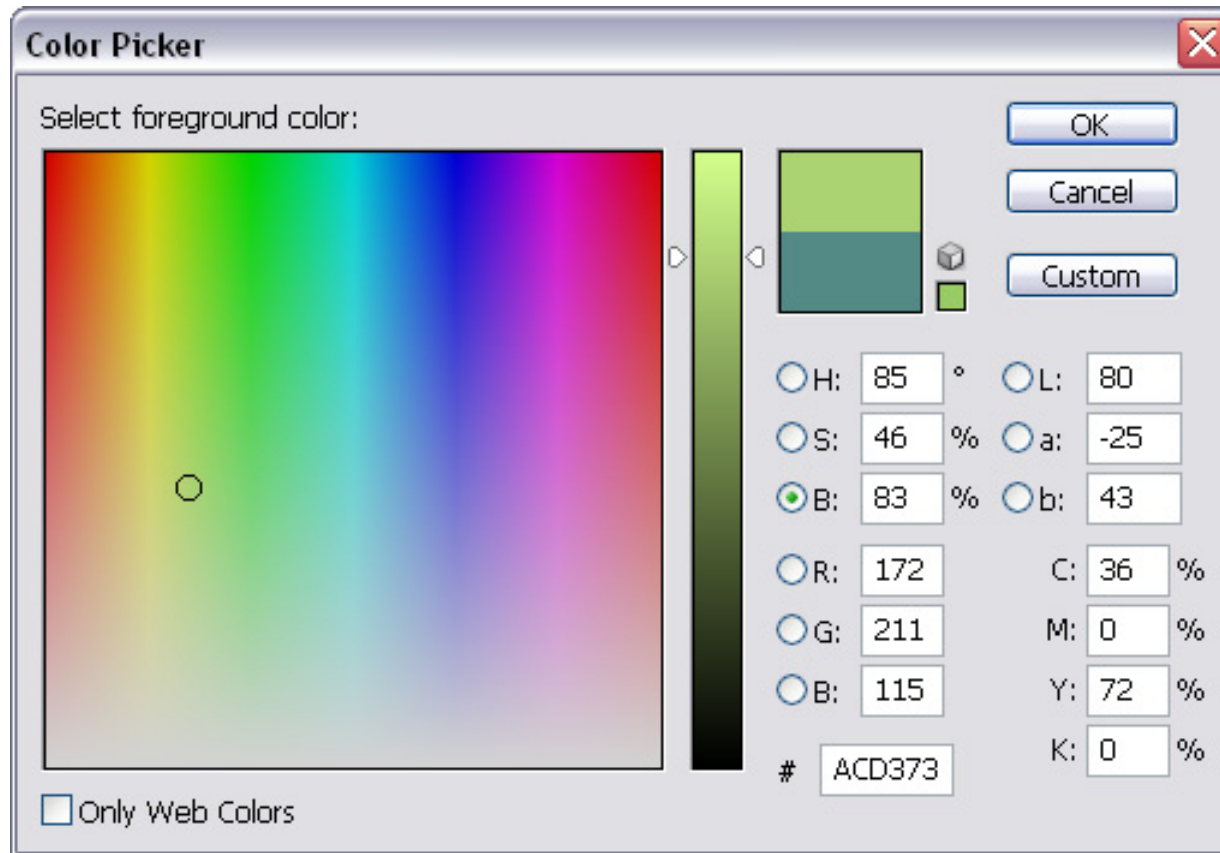
Styling Fonts

```
h1{  
font-family: arial, helvetica, sans-serif;  
color: #343F4E;  
}
```

Web Safe Colours



Hexadecimal Colours



Red: AC Green: D3 Blue: 73 = #ACD373

CSS in Action

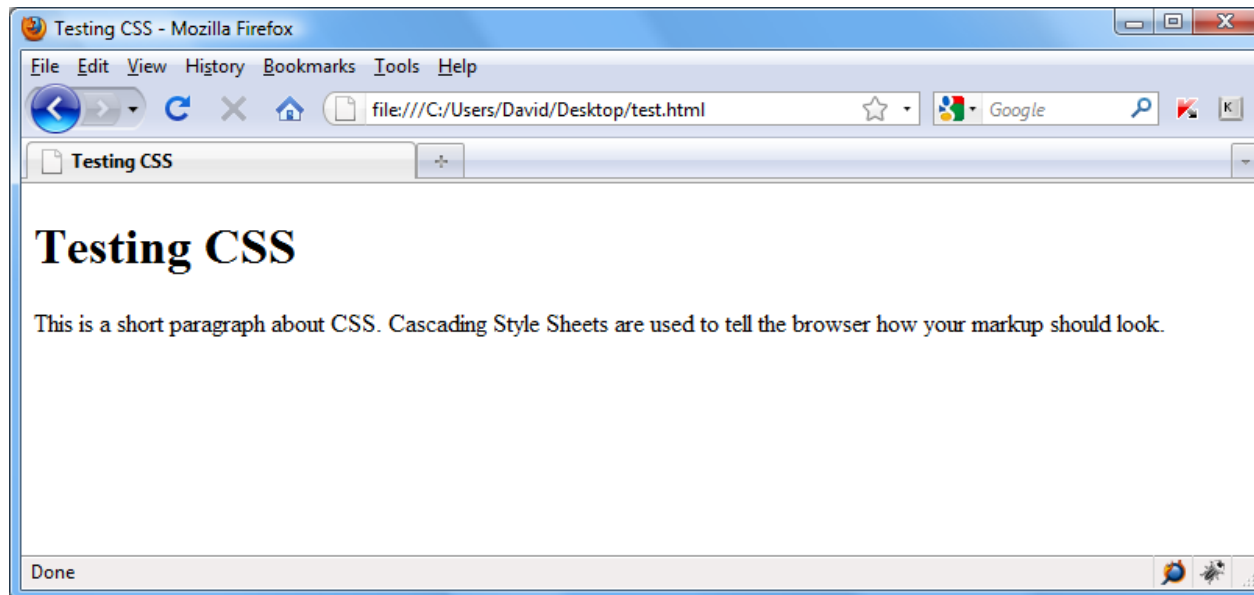
```
<div id="content">
```

```
<h1>Testing CSS</h1>
```

```
<p>This is a short paragraph about CSS.
```

Cascading Style Sheets are used to tell the browser how your markup should look.</p>

```
</div> <!-- close content -->
```



CSS in Action

```
<div id="content">
```

```
<h1>Testing CSS</h1>
```

```
<p>This is a short paragraph about CSS.
```

Cascading Style Sheets are used to tell the browser how your markup should look.</p>

```
</div> <!-- close content -->
```

```
h1 {
```

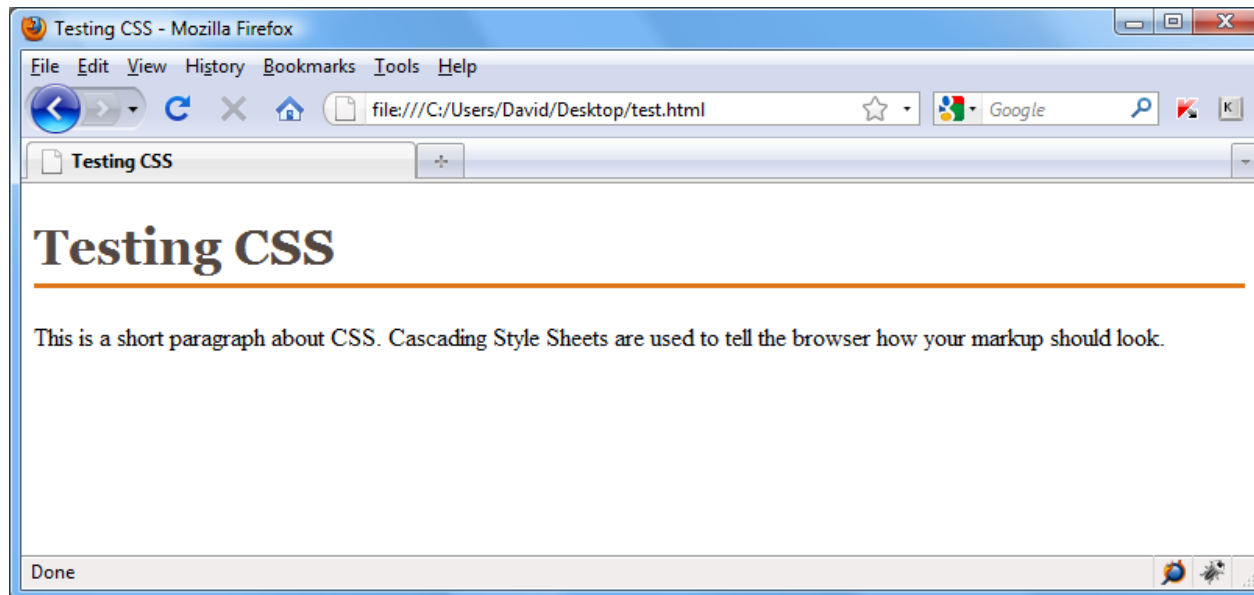
```
font-family:Georgia, "Times New Roman", Times, serif;
```

```
color:#534741;
```

```
padding-bottom:5px;
```

```
border-bottom:3px solid #DF7414;
```

```
}
```



CSS in Action

```
<div id="content">
```

```
<h1>Testing CSS</h1>
```

```
<p>This is a short paragraph about CSS.
```

Cascading Style Sheets are used to tell the browser how your markup should look.</p>

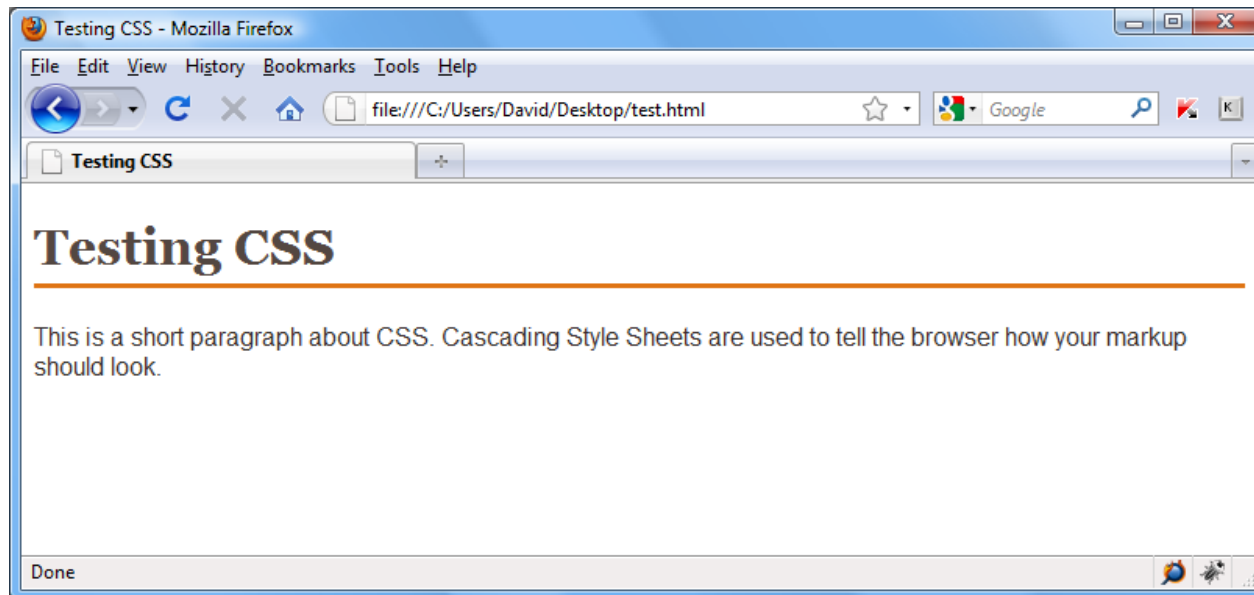
```
</div> <!-- close content -->
```

```
p {
```

```
font-family:Arial, Helvetica, sans-serif;
```

```
color:#362F2D;
```

```
}
```



CSS in Action

```
<div id="content">
```

```
<h1>Testing CSS</h1>
```

```
<p>This is a short paragraph about CSS.
```

Cascading Style Sheets are used to tell the browser how your markup should look.</p>

```
</div> <!-- close content -->
```

```
#content {
```

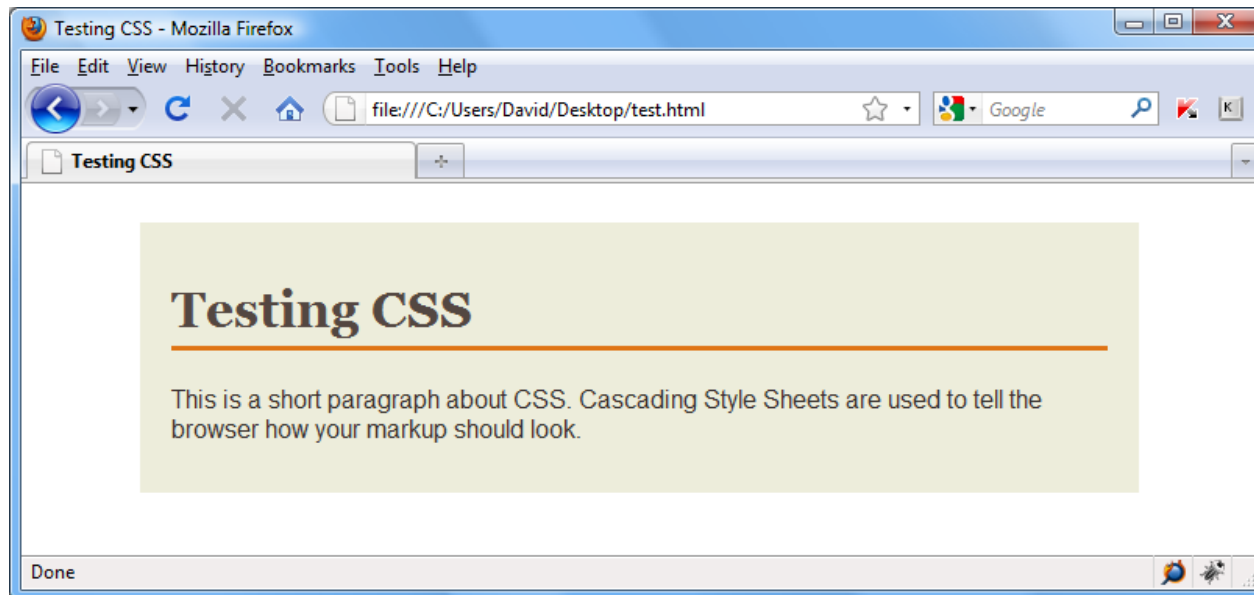
```
width:600px;
```

```
padding:15px 20px;
```

```
margin:25px auto;
```

```
background-color:#EDEDDB;
```

```
}
```



CSS in Action

```
<div id="content">
```

```
<h1>Testing CSS</h1>
```

```
<p>This is a short paragraph about CSS.
```

```
Cascading Style Sheets are used to tell the  
browser how your markup should look.</p>
```

```
</div> <!-- close content -->
```

```
body {
```

```
background-
```

```
image:url(background.png);
```

```
}
```



The Finished Stylesheet

```
body {  
background-image:url(background.png);  
}
```

```
h1 {  
font-family:Georgia, "Times New Roman", Times, serif;  
color:#534741;  
padding-bottom:5px;  
border-bottom:3px solid #DF7414;  
}
```

```
p {  
font-family:Arial, Helvetica, sans-serif;  
color:#362F2D;  
}
```

```
#content {  
width:600px;  
padding:15px 20px;  
margin:25px auto;  
background-color:#EDEDDB;  
}
```



Validate



CSS Validation Service

W3C CSS Validator results for <http://www.websitearchitecture.co.uk> (CSS level 2.1)

Jump to: [Warnings \(4\)](#) [Validated CSS](#)

W3C CSS Validator results for <http://www.websitearchitecture.co.uk> (CSS level 2.1)

Congratulations! No Error Found.

This document validates as [CSS level 2.1](#) !

To show your readers that you've taken the care to create an interoperable Web page, you may display this icon on any page that validates. Here is the XHTML you could use to add this icon to your Web page:



```
<p>  
<a href="http://jigsaw.w3.org/css-validator/check/referer">  
    
</a>  
</p>
```



```
<p>  
<a href="http://jigsaw.w3.org/css-validator/check/referer">  
    
</a>  
</p>
```

<http://jigsaw.w3.org/css-validator/>

```
<p class="end">The End</p>
```